

PART 1 LOCAL PATIENT PAPERWORK

This is for you to read. Part 2 is to be filled out and sent.

Dr. Jerry Hesch, PT, MHS, PT
Hesch Institute
25837 E. Maple Place,
Aurora, Colorado 80018
Phone: (303) 366-9445 8am-5pm MST
FAX: (303) 366-9998
Email: info@HeschInstitute.com
Website: www.HeschInstitute.com

Dear Potential, Colorado Clients:

This paperwork applies to you if you are within driving distance. However, if travel is far and you would like to stay and be seen for three days in a row, please see the Out-of-Town Patient Paperwork.

Thank you for choosing the Hesch Institute to help improve your physical health and well-being. We encourage all clients to become familiar with the Hesch Institute website and our You Tube channel “Jerry Hesch” where you will find unique cases and gain an appreciation of this approach. Please also review the patient section including the FAQs. When visiting the Hesch Institute you will receive one-on-one care with Jerry Hesch, DPT, MHS, PT as Dr. Hesch does not utilize therapy assistants or technicians. While we abhor extensive paperwork, it is a medicolegal mandate, and you are responsible for reading each page and making inquiry if there is anything that is unclear. There is a lot of necessary information in our effort to provide comprehensive definitive care and meet all medico-legal mandates. Thank you for your patience and understanding.

Dr. Hesch and his wife Karin have a home office in Aurora, Colorado. In addition to providing patient care, Jerry presents a few in-person continuing education workshops, develops online learning programs, performs research, publication and presentation at state, national and international conferences., and are active in conference presentation, research and publication and sharing information on social media.

Dr. Hesch provides a comprehensive chart review, detailed history taking, whole-body evaluation whole-body treatment, and helps to achieve an understanding of your presentation and the path to wellness. The goal beyond very effective long lasting Hesch Method manual therapy, is to provides education in self-management. Self -management typically includes instruction in self-mobilization so that ideally, you do not need return

visits with any practitioner, gentle exercise, prevention, ergonomic and ideal body mechanics instruction. The purpose of this unique approach to musculoskeletal and neurologic healthcare is, to get you off the protracted, expensive, healthcare roller coaster. We also wish to greatly reduce your economic burden. We want you to have clear answers and definitive care. On occasion, Dr. Hesch may suggest referral to another healthcare provider, or additional diagnostic work up, or short-term supportive care.

Local clients are scheduled for one-hour visit per day. Most conditions require a minimum of three days and a maximum of six. The first visit includes reviewing your medical history, a comprehensive full body evaluation, and treatment billed at \$200.00. Complex cases may take 1.5-hours on day one, and if so, cost is \$225.00 for day one. Each additional day's visit will be \$150.00 per hour. Estimated total for the 3 days will be between \$500.00-\$575.00. If additional time is needed, per mutual agreement, additional time will be billed in 15-minute increments of \$37.50. This unique model of care with complete one-on-one care with Dr. Hesch is a "cash-based practice" model. Payment is made each day at the conclusion of care. If comprehensive care for your presentation can be accomplished within two visits as does happen, the third visit will be canceled, and you will not be billed for that day.

Please bring comfortable clothing such as athletic wear. Please bring any devices you use for self-care to include foot orthotics, supports or braces, etc. We may video tape your exercises and self-treatment for your future home care, so please bring an 16GB or higher of free memory flash drive. Alternately, we can use your cell phone.

Once again, thank you for choosing the Hesch Institute. We look forward to participating in your health care. Please contact us for any questions. For any urgent matters please call as email response can delay.

Please note that we use "Dr. Hesch for any formal communication, however Jerry prefers to be greeted as "Jerry".

Sincerely Yours,



Dr. Jerry Hesch, MHS, DPT, PT

Map to Home Office

Hesch Institute
25837 E Maple PL
Aurora, CO 80018

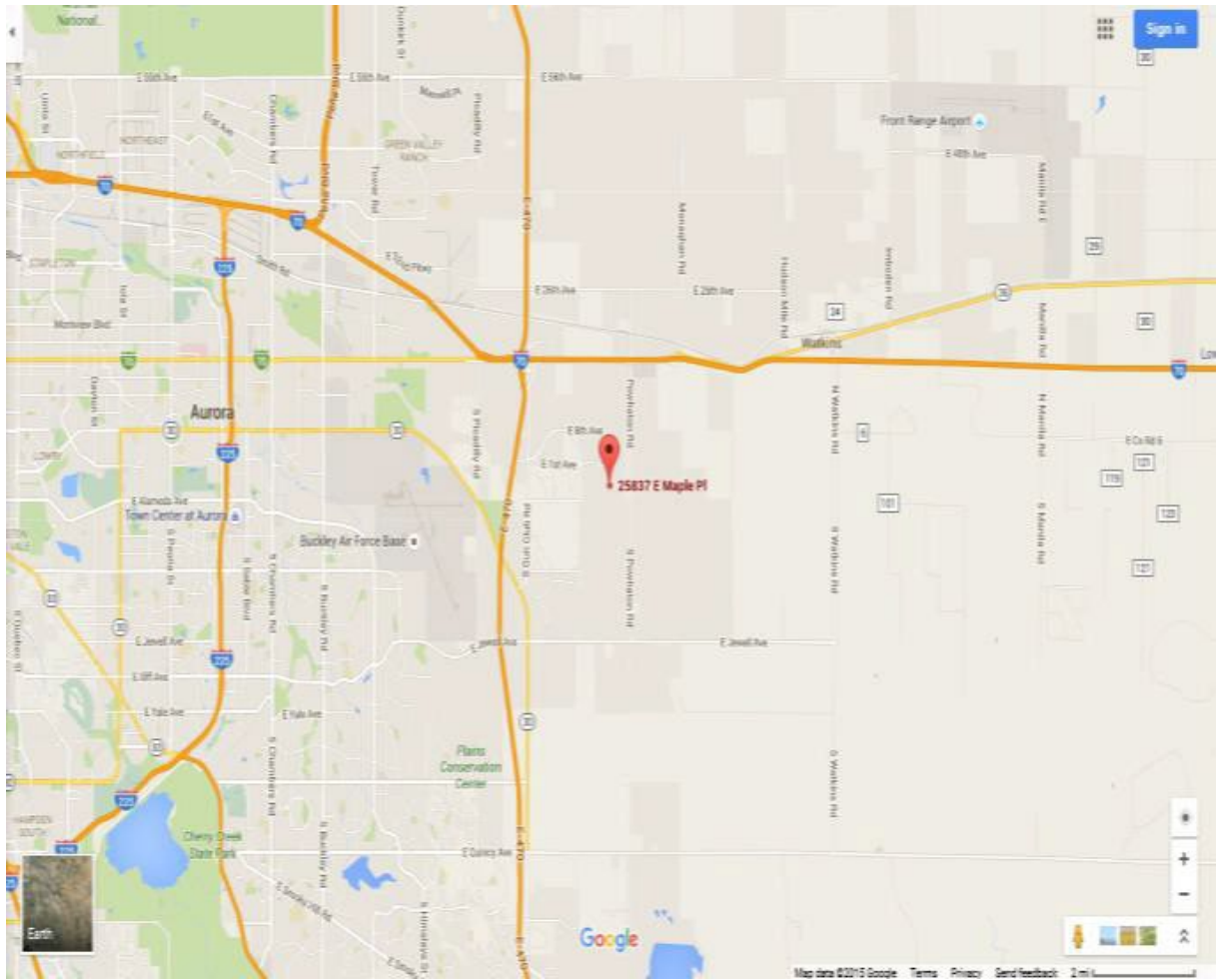
Fool Proof Directions: When using a GPS please utilize the cross streets by precisely inputting this into the GPS: "E. Maple PL and S. Millbrook St."

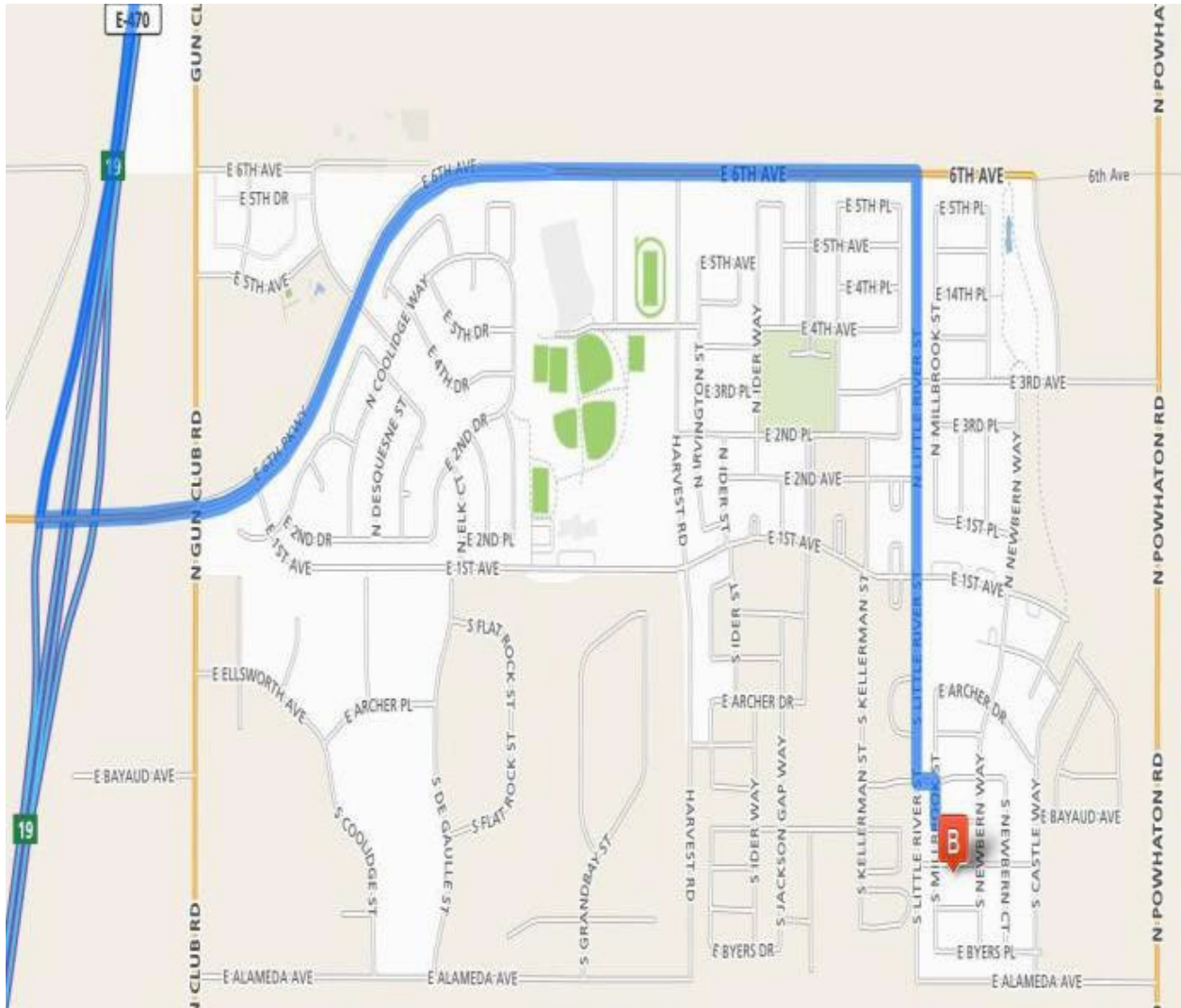
We recommend that you view a larger online map.

This will take you to the street intersection which is two houses away (do not count corner house).

DRIVING DIRECTIONS FROM E-470 and E 6th Parkway

1. Start from Interstate E-70 and E-470
2. Merge onto E-470 (Portions toll).
3. Take EXIT 19 toward E 6th Parkway.
4. Turn left onto E 6th Pkwy.
5. E 6th Pkwy becomes E 6th Ave.
6. Turn right onto N Little River St.
7. N Little River St becomes S Little River St.
8. Turn left onto E Bayaud Ave.
9. Turn right onto S Millbrook St.
10. Turn left onto E Maple Pl.
11. The second house on left facing E Maple Pl is the home office 25837 E Maple PL





Please note that on this page the map red arrow does not clarify the fact that the correct address is on the left side of the street.

PATIENT INSTRUCTIONS FOR FIRST VISIT

- We no longer require clients to wear face masks unless they have not been vaccinated. We will wear masks upon request. We will continue to follow the CDC and the Colorado Department of Public Health and Environment recommendations which could change anytime. We will continue to use all other sanitary practices described on the website.
- Please review the directions on p2 of patient paperwork. It is important to input this in your GPS: E Maple Pl and S Middleton St 80018. Do not count the corner house, and we are the second house on the left.
- After you ring the doorbell, please wait a minute as I may be upstairs
- This is a home office with dogs and cats. The cats occasionally wander down, dogs are upstairs. Please let me know if you have allergies and I will vacuum again just before your visit, and air out the house. We have Benadryl on hand.
- Please bring a 16GB flash drive in case we film your presentation or your self-care. Alternately, we can use your cell phone.
- The home office is 303-366-9445. My cell phone is 702-561-0143 (Mountain Time).
- If you use a SI belt, please bring it and same for orthotics. I can review them on day 2. Sometimes the rearfoot posting is not adequate especially for hyper pronation. Most are 2mm/2-degrees, but 4-6-degrees may be very helpful for some.
- If you have a spouse or significant other, they are welcome to observe, and it is especially helpful if they can attend on 3rd visit so that I may instruct them in hands-on techniques.
- Please feel free to call (1-303-366-9445) or Email (JerryHesch@HeschInstitute .com [no spaces]) but please know that Email can be delayed for up to 3-business days.
- My cell phone is 1-702-561-0143.

Thank you. I look forward to working with you.

Jerry Hesch, MHS DPT